



Enriching Lives

# “Kirloskar Green” Gensets

## 6K Series

Three Phase  
Liquid Cooled Silent Genset



Range 140 & 160 kVA



Salient Features

### ■ Customized product range :

- Ready to use gensets, available in 140 and 160 kVA ratings.
- Gensets powered with Liquid Cooled engines.
- DG Sets suitable to run in synchronization mode.
- Tailored to meet your exact power needs.

### ■ Smart Aesthetics :

- State of the Art Design.
- Compact in size, smaller footprint hence lower space requirement.
- Smart Look, fully integrated weather proof acoustic enclosure.

### ■ Environment Friendly : The power to save environment and the earth. :

- Meets stringent emission norms as specified by CPCB

### ■ Highest Reliability :

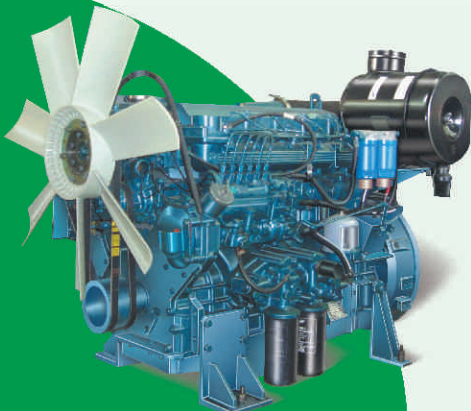
- Utmost reliability ensuring continuous power for smooth operation.
- Electronic governor for Isochronous governing & parallel operations as standard scope.
- Extremely rugged, durable design.
- Low lifecycle costs.
- Safety for low lube oil pressure, high coolant temperature, low fuel level etc.
- State-of-the-art technology for operations in low / high ambient temperature, high humidity and high altitude.

### ■ Unmatched Performance :

- Low fuel & lube oil consumption ensuring excellent economy.
- Low noise & vibration levels.
- High fuel efficiency even at part operating load.
- Highest power to weight ratio in its class.
- K-cool super plus coolant and K-oil for longer life.

### ■ Maintenance friendly design, ease of operation :

- Ready to use design.
- Easy serviceability for routine maintenance, replacement, overhaul.
- Modular design, ensuring lower maintenance cost.
- Ensures long maintenance intervals.
- Easy availability of spare parts.
- Minimum cost for maintenance, spares & services.
- Smart Genset Controller for close monitoring of the engine & genset performance parameters which enhances the safety of the system.
- Annual maintenance contract through service dealers.
- PAN India single point AMC.

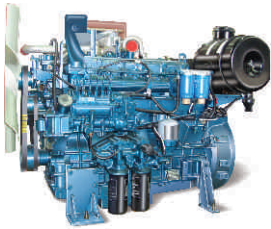


# 6K Series

# “Kirloskar Green” Gensets

## Standard Features

### ■ Engine



- Liquid Cooled technology
- Offering power output suitable for 140 and 160 kVA ratings
- Available in 6 cylinder configuration
- Most compact, extremely robust & rugged design
- 500 Hrs. oil change period
- Lowest fuel consumption in it's class
- Meets latest CPCB emission norms
- 12 V electric start system.
- Closed Crankcase ventilation system ensures no leakages, increased filter life and avoids clogging of radiator and air cleaner.

### ■ Alternator



- Kirloskar Green Alternator
- Compact Design
- Best in Class Efficiency
- Positive Voltage built-up
- Special windings to reduce harmonics
- Electronic AVR
- High circuit current capacity upto 300% ensuring controlled regulation even at variable loads (for 3 sec.)
- Epoxy gel coating to suit various environment conditions
- Alternator with SAE-2 housing

### ■ Control Panel



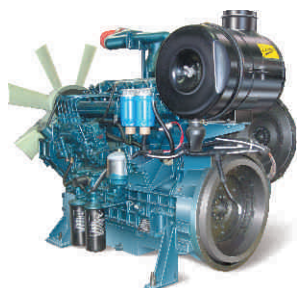
- State of the art Compact Microprocessor based fully configurable control unit
- High performance graphical bigger LCD display and suitable for wide operating temperature (-20 to 70°C)
- Integrated Auto Mains Failure (AMF) functions with in built provision of auto & manual contactor controls.
- Wide operating voltage range (8 – 36 V)
- Operational alarm history stored in memory for easier diagnosis
- For detailed features, contact KOEL representative

### ■ Canopy



- Light weight & Compact design
- State-of-the-art Kirloskar Green Design
- Weather proof, acoustic enclosure, meets latest CPCB norms
- The powder-coated enclosure is manufactured on high-tech CNC machines to ensure smart quality finish & life long durability
- Specially designed to operate even at 50°C air inlet temperature
- Insulation material conforms to UL94HF1 class for flamability
- Use of zinc plating with green passivated hardware to withstand salt spray test as per ASTM B-117
- Provided with central lifting arrangement for easy installation

## Optional Features



- Remote monitoring
- Additional electrical metering
- Auto Mains Failure panel
- Cold starting aid
- Parallel operations for Genset.
- Special air filtration system for dusty atmosphere
- Facility for external agency inspection
- Can operate on 100% Bio diesel giving 100% power

# Technical Data

## Specifications of 6K Series Genset

Range 140 to 160 kVA

### DG Set Specifications

Gen-set Parameters	Unit	Genset Model	
		KG140WS	KG160WS
kVA (kW) rating at 0.8pf	kVA(kW)	140 (112)	160 (128)
Voltage	V	415	415
Frequency	Hz	50	50
Dimensions with canopy	mm(LxBxH)	4040 X 1540 X 1905	4040 X 1540 X 1905
Dry weight of genset with canopy	Kg	3500	3550
Electrical starting system	V	12	12
Battery capacity	AH	150	150
DG set noise level at 1 Mtr. distance	dB(A)	<75	<75

### Engine Specifications

Engine Parameters	Unit	Engine Model	
		6K1080TA I	6K1080TA
Rated output ( prime continuous rating ) as per ISO 3046	kW (HP)	127.5 (174)	147.2 (200)
No of Cylinders	No's	6	6
Bore x Stroke	mm	105 x 125	105 x 125
Aspiration	NAT/TA	TA	TA
Governor		Electronic	Electronic
Break mean effective pressure	Kg/Cm <sup>2</sup>	15.87	18.14
*SFC at 100 % load	Gms/Hp-Hr	146	146
Lube oil consumption	Ltrs/Hr	0.07	0.08
Lube oil change period	Hrs.	500	500
Lube oil sump capacity	Ltrs	23	23
Engine coolant capacity	Ltrs.	39	39

### Alternator Specifications

Alternator Parameter	Unit	Alternator Model	
		KG254S0	KG254S1
Specifications		140 kVA	160 kVA
Insulation Class-Armature		H	H
Time permitted to build up rated voltage at rated RPM	Sec's	<5	<5
Permissible voltage dip	%	<18	<18
Alternator efficiency at 100% load	%	92.6	92.8
Alternator efficiency at 75% load	%	93.2	93.3

In view of continuous product updation and design changes, all above specifications and dimensions are subject to change without prior notice.

#### Notes :

- Genset ratings are as per ISO 8528 performance class G2.
- Prime Power Rating is the maximum power available continuously for a variable electrical load for unlimited number of hours per year under standard operating conditions.
- For the site conditions other than standard operating conditions, consult KOEL for available prime power.
- Specific gravity of diesel to be considered as 0.845 (+5 % tolerance as per ISO 3046).
- All canopy dimensions have tolerance of + 50 mm.
- \* Under standard test conditions (+5% tolerance).



# After Sales Service Support

## Customer Care :

Round the clock, at your service, whenever & wherever you need.

After sales service is the key to the long-term viability of any business. We are committed to provide adequate after sales service support & believe in creating enduring relationship with every individual customer we serve. Kirloskar believes in the wise saying "think global & act local" with full dedication, which have helped us, successfully achieve "100 years of great service".

## Service Offerings

- Free service checks.
- Authorized Kirloskar Service Dealers in your neighborhood to promptly respond to your service calls, provide extensive after sales support including operational, maintenance & repair contract.
- Single window service for Genset & Customised AMC.
- 24/7 help line service for all our customers, offering timely customer support to deal with inquiries.
- Fully implemented CRM module to provide proactive & quick service response.
- Trained & experienced service team to provide value-added support to the highest standards ensuring customer satisfaction at all times.
- Support systems like Mean Time to Restore, Engine Down Order, First Pick Availability for maximum uptime of Gensets.
- K-oil / K-cool super plus for product life extension.
- Excellent product support through easy availability of spare parts, product training, Re-conditioning and warranty administration.
- Easy and Quick delivery... anywhere anytime.



### Help Desk :

Call 1800 233 3344 (Toll-free from BSNL / MTNL)  
020-6608 4608 (Other than BSNL / MTNL)  
Email : koel.helpdesk@kirloskar.com

Customer assistance is available from our help desk (24 hrs. x 7 days a week) for all after sales & service assistance.

## Service Network across the Nation

Where your business operations are far reaching across the country & moreover when they are located in absolute remote places, your business counts on reliability & availability ensuring minimum downtime. Key to the quality of our after sales service is our strong service force, which are always ready to attend your calls anywhere anytime.



## KOEL Sales Offices

- **Ahmedabad** : Ground Floor, D Block, Pruthvi Tower, Jodhpur Char Rasta, Ahmedabad - 380015. Phone : +91 (79) 2692 9687, 2692 9689.
- **Bangalore** : 3rd Floor, Shri Lakshmi Complex, 15, St. Marks Road, Bangalore - 560 001. Phone : +91 (80) 2558 7562, 30578164, 30578165. Fax : +91 (80) 2558 7559.
- **Bhubaneswar** : 178 A, Zone-B, Mancheswar Industrial Estate, Bhubaneswar-751010, Orissa. Phone : +91 (674) 2585064, 2586059, 2588047. Telefax : +91 (674) 2588021.
- **Chennai** : Nelson Tower, 1st Floor, 2nd Wing, 51, Nelson Manickam Road, Chennai - 600 029. Phone : +91 (44) 23744661, 23744624.
- **Cochin** : No. 39/2694 A1, Anugraha, Panthiyil Lane, Warriam Road, Cochin - 682016. Phone : +91 (484) 2385757, 2385758. Fax : +91 (484) 2385756.
- **Guwahati** : 29,G & B Road, Pan Bazaar, Guwahati - 781 001. Phone : +91 (361) 2736016, 2736017. Telefax : +91 (361) 2736015.
- **Indore** : 203, Goldstar Complex, Opp Treasure Island, 576, MG Road, Indore - 452001. Phone : +91 (731) 3913108, 3913109, 3913110, 3913111. Telefax : +91 (731) 3913112.
- **Jaipur** : 21, Sudarshan Pura, Industrial Area, Bais Godwn, Jaipur - 302006. Phone : +91 (141) 2210405, 2214149, 2214150. Fax : +91 (141) 2214149.
- **Kolkata** : 8th Floor, Poonam Building, Flat Nos. 8A & 8B, 5/2, Russel Street, Kolkata - 700 071. Phone : +91 (33) 2217 0858, 2217 0860, 2217 0861. Fax : +91 (33) 2217 0859.
- **Lucknow** : 498 / 143 KA, Faizabad Road, Near IT Collage Chauraha, Upper Floor of State Bank of Indore, Lucknow - 226 007. Phone : +91 (522) 2741440/42/43. Fax : +91 (522) 2741441.
- **Ludhiana** : Plot No. 12, NPC Tempo Union Street, Near Arjun Gas Godown Sherpur Chowk Ludhiana - 141003. Phone : +91 (161) 254 6667, 2546669. Fax : +91 (161) 2546753.
- **New Delhi** : 404, 4th Floor, Surya Kiran Building, 19, Kasturba Gandhi Marg, New Delhi-110001. Phone : +91 (11) 23711786, 47195200, 47195202, 47195217, 47195205. Fax : +91 (11) 23710159.
- **Secunderabad** : 5-2-220 to 222, 2nd Floor, Padmavathi Tower, Hyder Basti, Opp. Andhra Bank, Ranigunj, Secunderabad-500003. Phone : +91 (40) 27534197, 27534176. Telefax : +91 (40) 27534170.

Corporate and Marketing Head Office

## KIRLOSKAR OIL ENGINES LIMITED

Laxmanrao Kirloskar Road, Khadki, Pune 411 003 INDIA.  
Tel. : +91(20) 2581 0341  
Fax : +91(20) 2581 3208, 25810209

[www.kirloskar.com](http://www.kirloskar.com)



Enriching Lives

Stamp of  
Authorised  
Representative